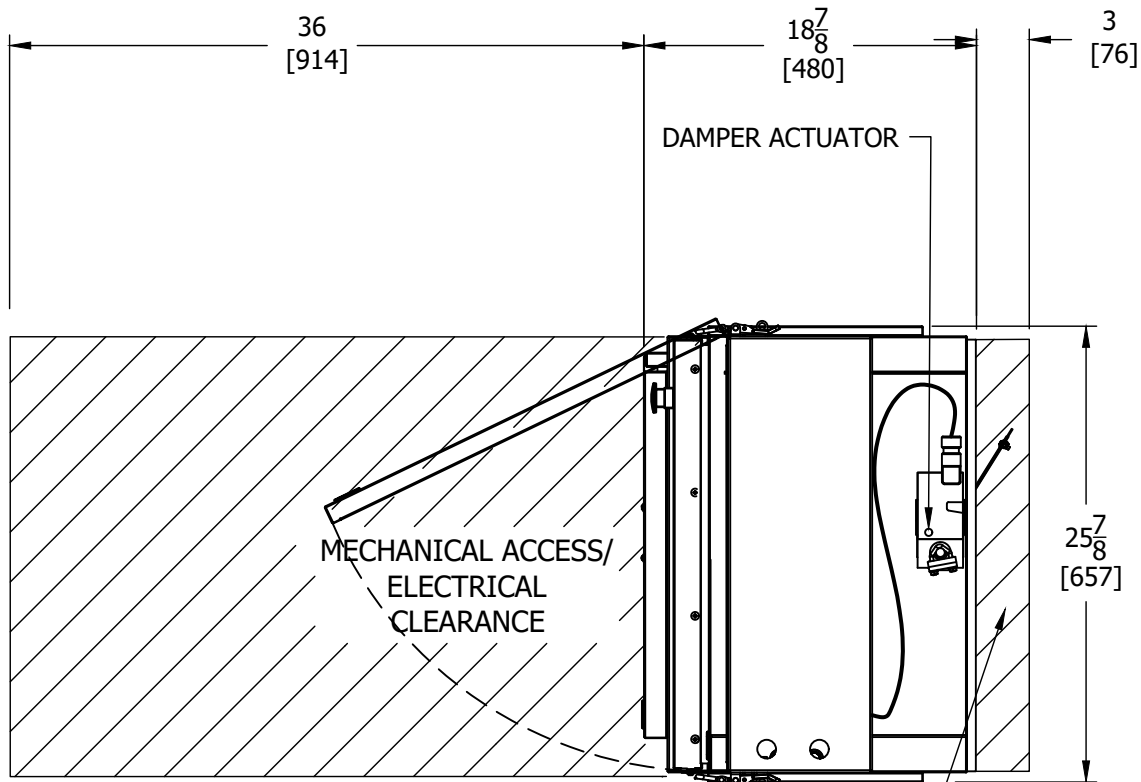


APPROVAL DRAWING	
<input type="checkbox"/> APPROVED	
<input type="checkbox"/> APPROVED AS NOTED	
<input type="checkbox"/> RETURNED FOR CORRECTIONS	
INITIAL: _____	DATE: _____

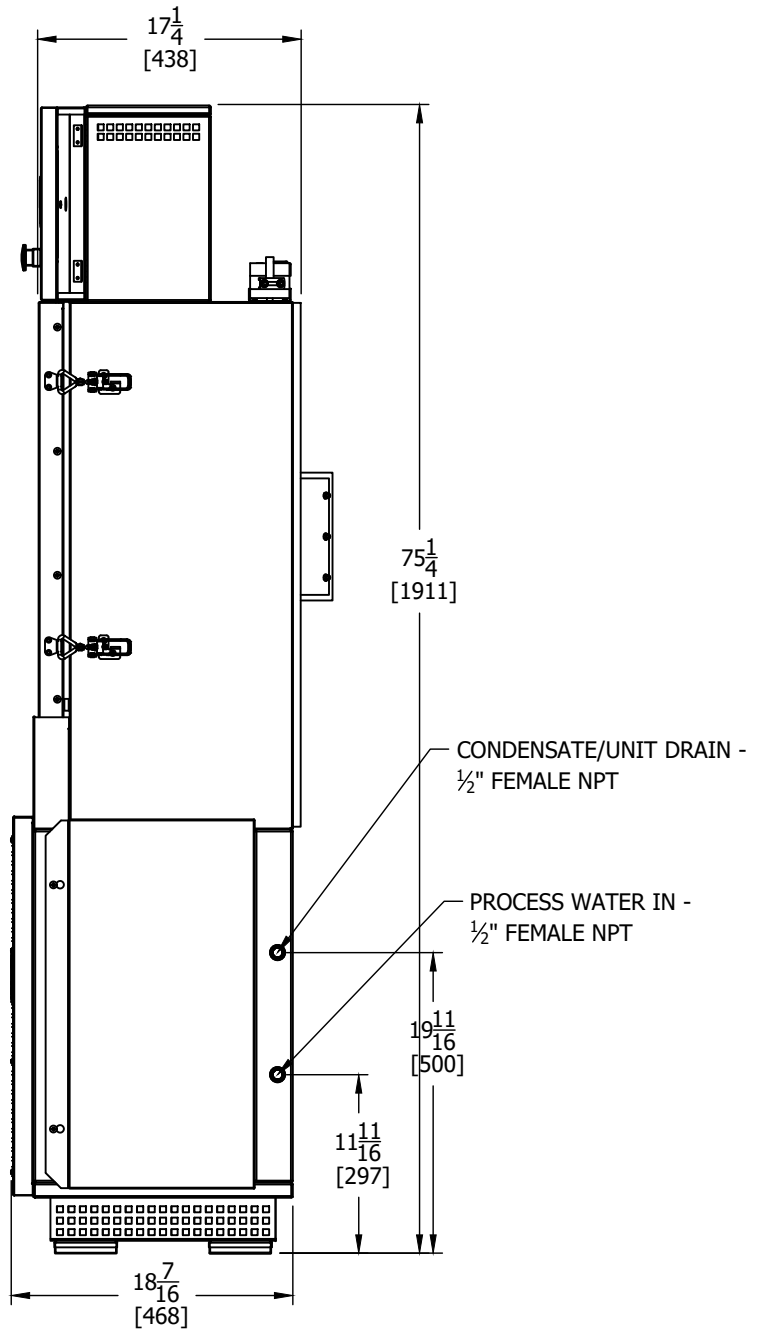


TITLE 250-400CFM VERTICAL AIR HANDLER FRONT VIEW			
DATE	27 Dec 2022	DRAWN	HUGH LINTON
DWG. REV.	DWG. NO.	MODEL REV.	SHEET
A	9224-81N0		1 of 7



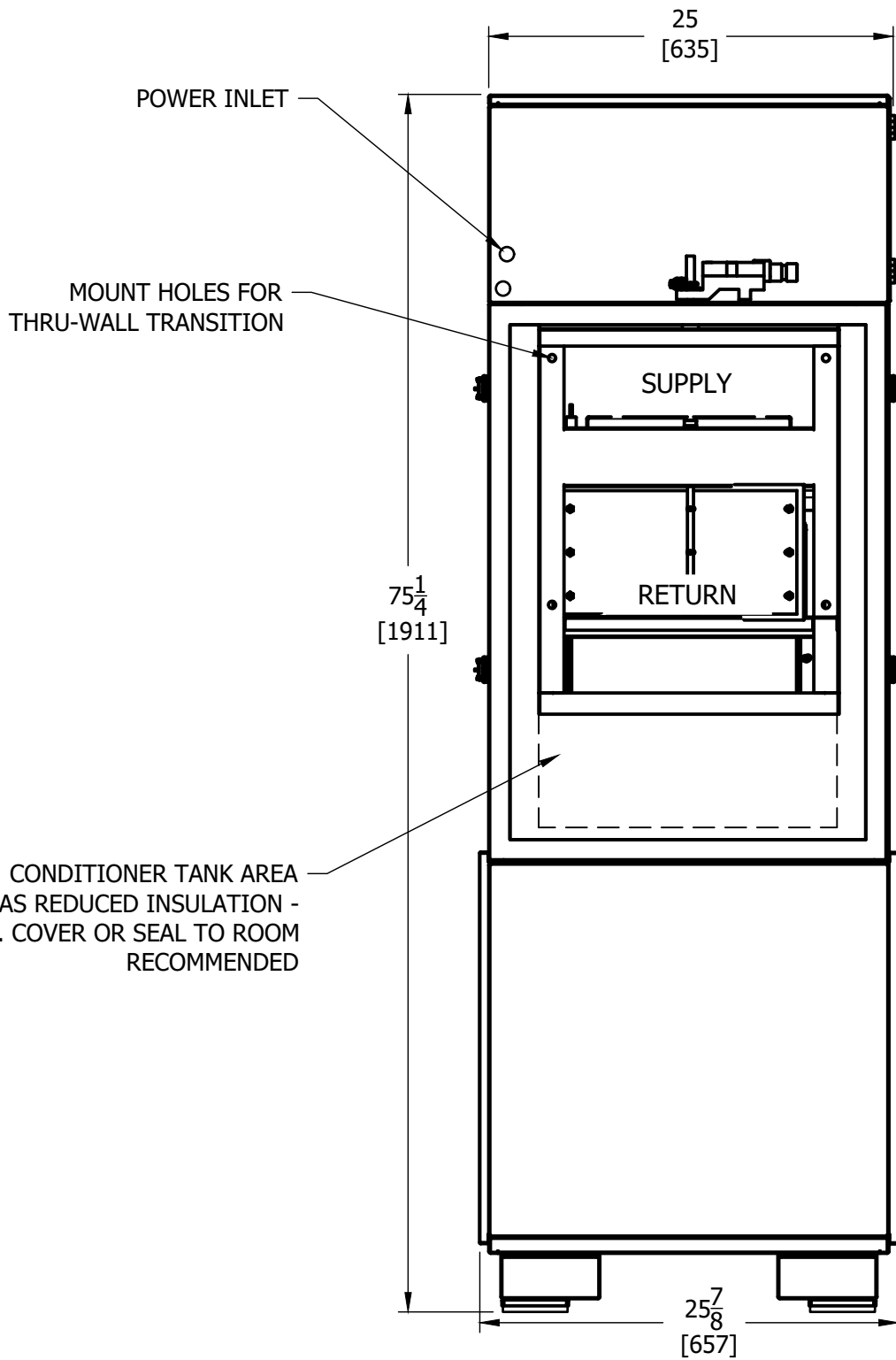
APPROVAL DRAWING	
<input type="checkbox"/> APPROVED <input type="checkbox"/> APPROVED AS NOTED <input type="checkbox"/> RETURNED FOR CORRECTIONS	
INITIAL: _____	DATE: _____

 PARAMETER GENERATION & CONTROL Black Mountain, NC		TITLE 250-400CFM VERTICAL AIR HANDLER TOP VIEW	
		DATE 27 Dec 2022	DRAWN HUGH LINTON
DWG. REV. A	DWG. NO. 9224-81N0	MODEL REV.	SHEET 2 of 7




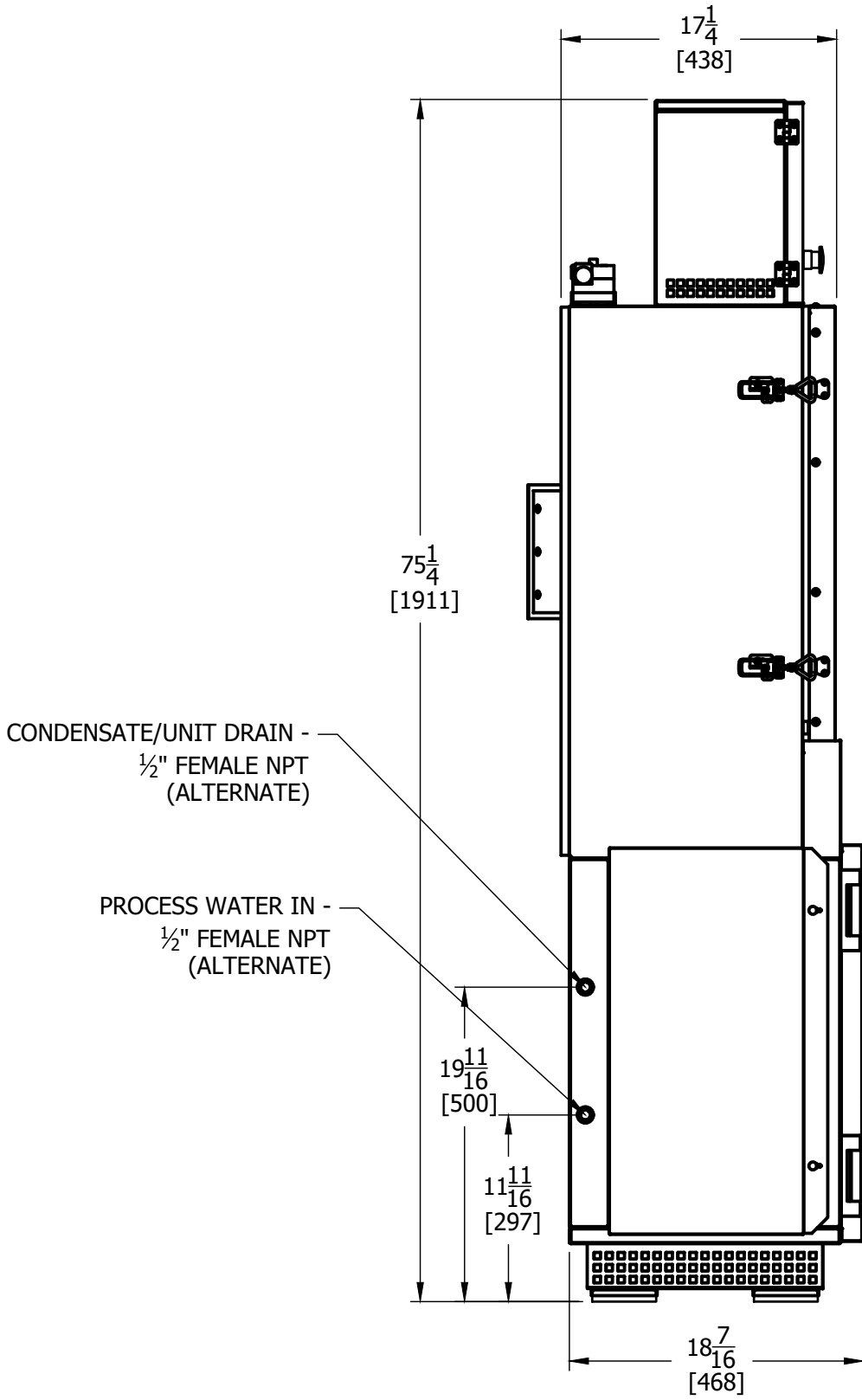
APPROVAL DRAWING	
<input type="checkbox"/> APPROVED	
<input type="checkbox"/> APPROVED AS NOTED	
<input type="checkbox"/> RETURNED FOR CORRECTIONS	
INITIAL: _____	DATE: _____

 PARAMETER GENERATION & CONTROL Black Mountain, NC		TITLE 250-400CFM VERTICAL AIR HANDLER RIGHT VIEW	
		DATE 27 Dec 2022	DRAWN HUGH LINTON
DWG. REV. A	DWG. NO. 9224-81N0	MODEL REV.	SHEET 3 of 7



APPROVAL DRAWING	
<input type="checkbox"/> APPROVED	
<input type="checkbox"/> APPROVED AS NOTED	
<input type="checkbox"/> RETURNED FOR CORRECTIONS	
INITIAL: _____	DATE: _____

 PARAMETER GENERATION & CONTROL Black Mountain, NC	TITLE 250-400CFM VERTICAL AIR HANDLER BACK VIEW	
	DATE 27 Dec 2022	DRAWN HUGH LINTON
	DWG. REV. A	DWG. NO. 9224-81N0
	MODEL REV.	SHEET 4 of 7



APPROVAL DRAWING	
<input type="checkbox"/> APPROVED <input type="checkbox"/> APPROVED AS NOTED <input type="checkbox"/> RETURNED FOR CORRECTIONS	
INITIAL: _____	DATE: _____



TITLE 250-400CFM VERTICAL AIR HANDLER LEFT VIEW			
DATE 27 Dec 2022		DRAWN HUGH LINTON	
DWG. REV. A	DWG. NO. 9224-81N0	MODEL REV.	SHEET 5 of 7


MODEL NUMBER	9224-81N0		
VOLTAGE	208/230	200/230	VOLTS
PHASE	1	1	
FREQUENCY	60	50	HERTZ
FULL LOAD AMPS	11.5/11.1	11.8/11.2	AMPS, FLA
TYPICAL RUNNING AMPS	8.9/8.3	9.4/8.5	AMPS, RLA
MINIMUM CIRCUIT AMPACITY	13	13	AMPS
MAXIMUM EXTERNAL PROTECTOR	20	20	AMPS
MAXIMUM HEAT OF REJECTION	6,157	5,402	BTU/HOUR
	1,551	1,361	KCAL/HOUR
HEATERS, AIR	751/918	694/918	WATTS
REFRIGERANT	R450A		
PROCESS WATER MAX. PRESSURE	125		PSIG
		8.6	BAR
PROCESS WATER MIN. PRESSURE	0.25		PSIG
		0.02	BAR
PROCESS WATER MAX. USAGE	3		GAL/DAY
		11.4	L/DAY
MAX. CONDENSATE PRODUCTION	3		GAL/DAY
		11.4	L/DAY
WEIGHT NET/SHIPPING	325/500		LB
		147/227	KG
TEMPERATURE RANGE	SEE SUBMITTAL SUMMARY		°F/°C
ACCEPTABLE AMBIENT RANGE	65-95		°F
		18.3-35	°C
TEMPERATURE CONSTANCY (CONTROL)	±0.36		°F
		±0.2	°C
RELATIVE HUMIDITY RANGE	SEE SUBMITTAL SUMMARY		%Rh
RH CONSTANCY (CONTROL)	±0.5		%Rh

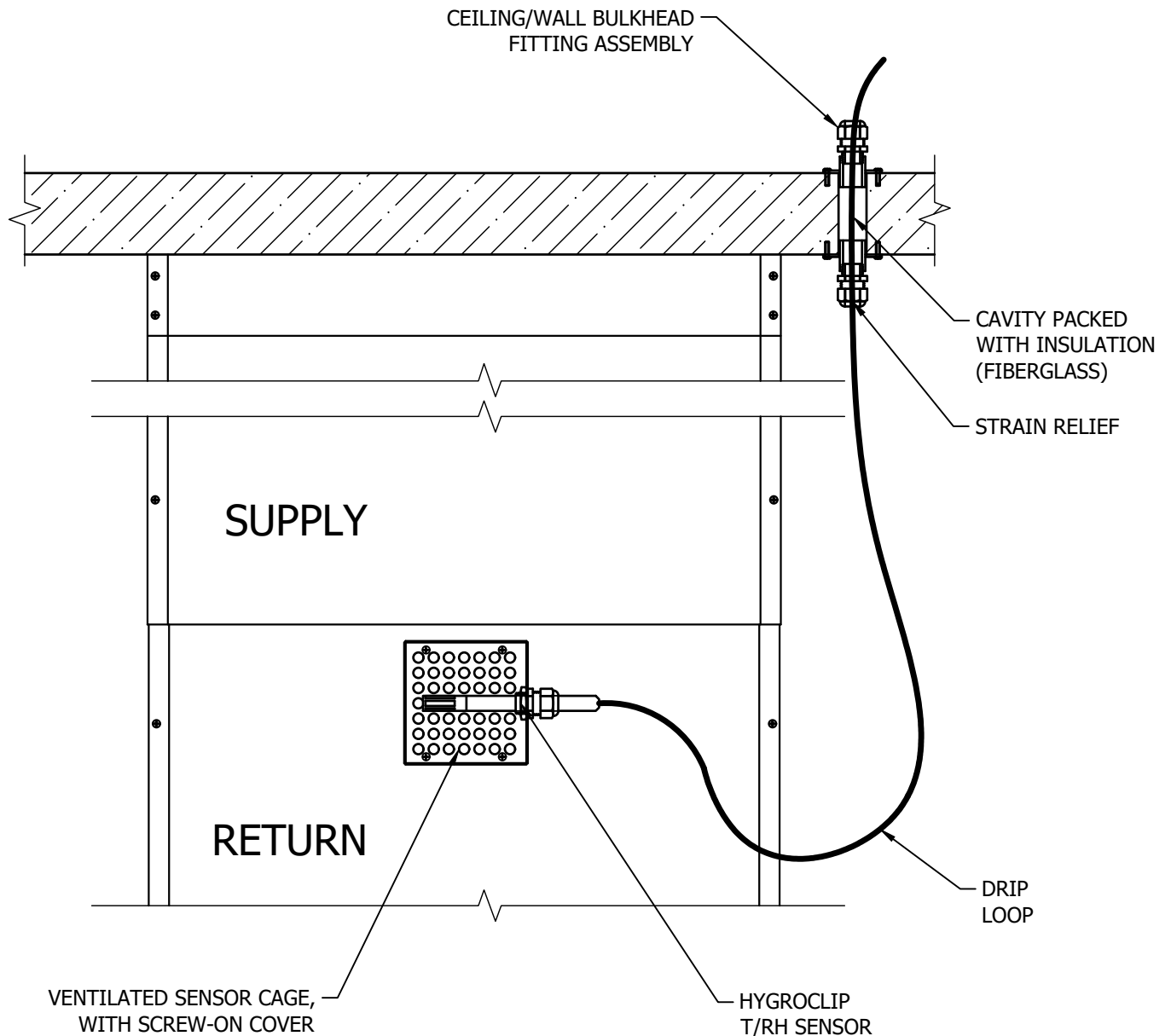
CUSTOMER MUST SUPPLY TO CONDITIONER

1. ELECTRICAL POWER
2. PROCESS WATER IN CONNECTIONS TO CONDITIONER
3. CONDENSATE/UNIT DRAIN CONNECTION

NOTE:
SPECIFICATIONS SUBJECT TO
CHANGE WITHOUT NOTICE

APPROVAL DRAWING	
<input type="checkbox"/> APPROVED <input type="checkbox"/> APPROVED AS NOTED <input type="checkbox"/> RETURNED FOR CORRECTIONS	
INITIAL: _____	DATE: _____


 PARAMETER <small>GENERATION & CONTROL Black Mountain, NC</small>	TITLE 9224-81N0 SPECIFICATIONS	
	DATE 27 Dec 2022	DRAWN HUGH LINTON
DWG. REV. A	DWG. NO. 9224-81N0	MODEL REV. SHEET 6 of 7



NOTES:

1. NO SEALANT TO BE USED IN WALL/CEILING CAVITY
2. SENSOR TO BE MOUNTED HORIZONTALLY, WIRE PERMITTING DRIP LOOP
3. BULKHEAD ASSEMBLY TO BE INSTALLED IN EITHER CEILING OR WALL AS CONVENIENT
4. TYPICAL INSTALLATION SHOWN; SENSOR MAY ALSO BE INSTALLED TO SUPPLY VIA BRACKET

APPROVAL DRAWING	
<input type="checkbox"/> APPROVED <input type="checkbox"/> APPROVED AS NOTED <input type="checkbox"/> RETURNED FOR CORRECTIONS	
INITIAL: _____	DATE: _____

 PARAMETER GENERATION & CONTROL Black Mountain, NC		TITLE 250-400CFM VERTICAL AIR HANDLER SENSOR DETAIL	
		DATE 27 Dec 2022	DRAWN HUGH LINTON
DWG. REV. A	DWG. NO. 9224-81N0	MODEL REV.	SHEET 7 of 7