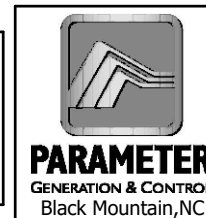
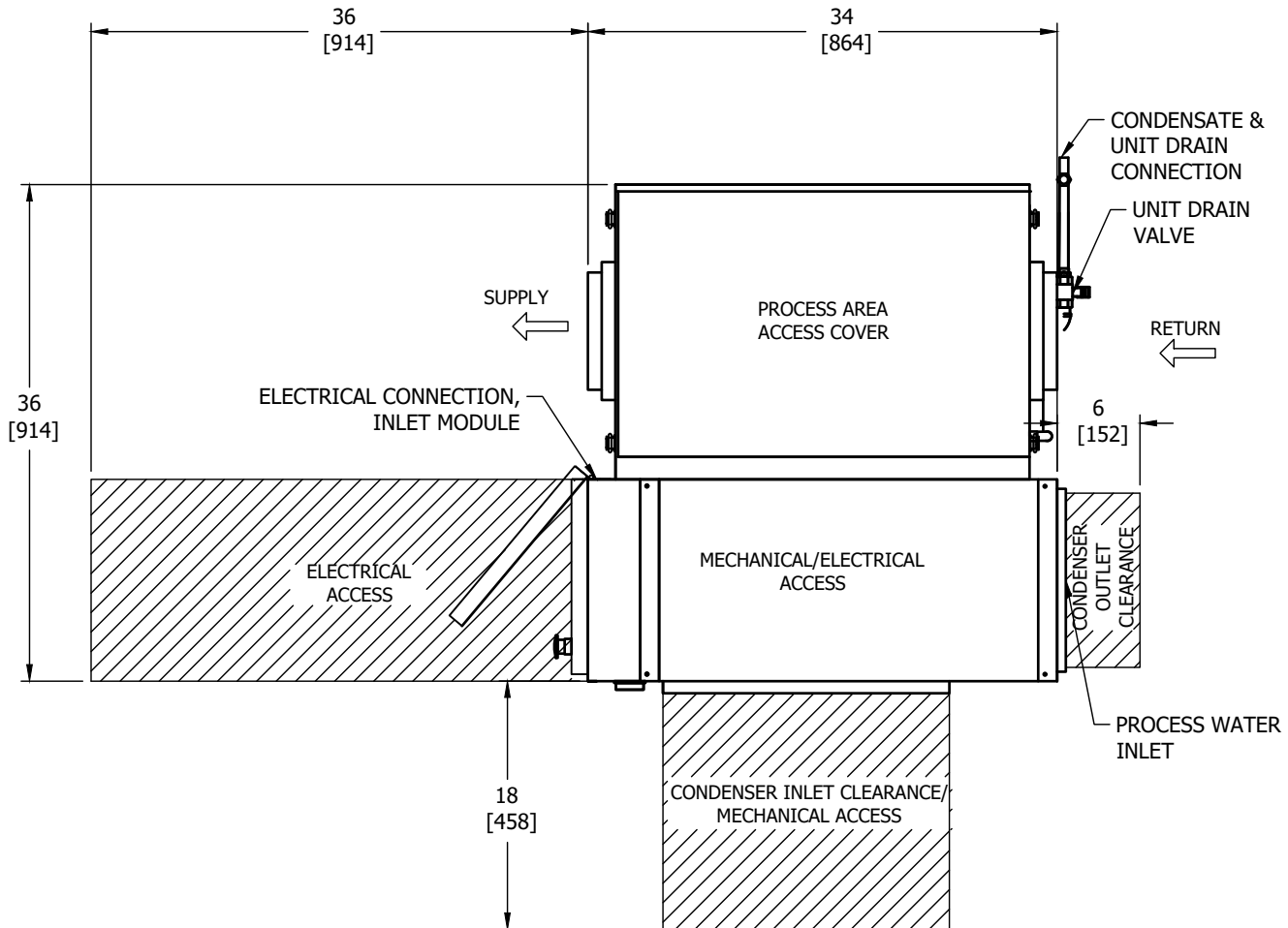


NOTE:
TOLERANCE UNLESS SPECIFIED: $\pm\frac{1}{4}$ " [6.35]

APPROVAL DRAWING	
<input type="checkbox"/> APPROVED	
<input type="checkbox"/> APPROVED AS NOTED	
<input type="checkbox"/> RETURNED FOR CORRECTIONS	
INITIAL: _____	DATE: _____



TITLE 250-400CFM HORIZ. AIR HANDLER FRONT VIEW			
DATE 27 Jan 2023		DRAWN HUGH LINTON	
DWG. REV. A	DWG. NO. 9324-81R0	MODEL REV.	SHEET 1of7



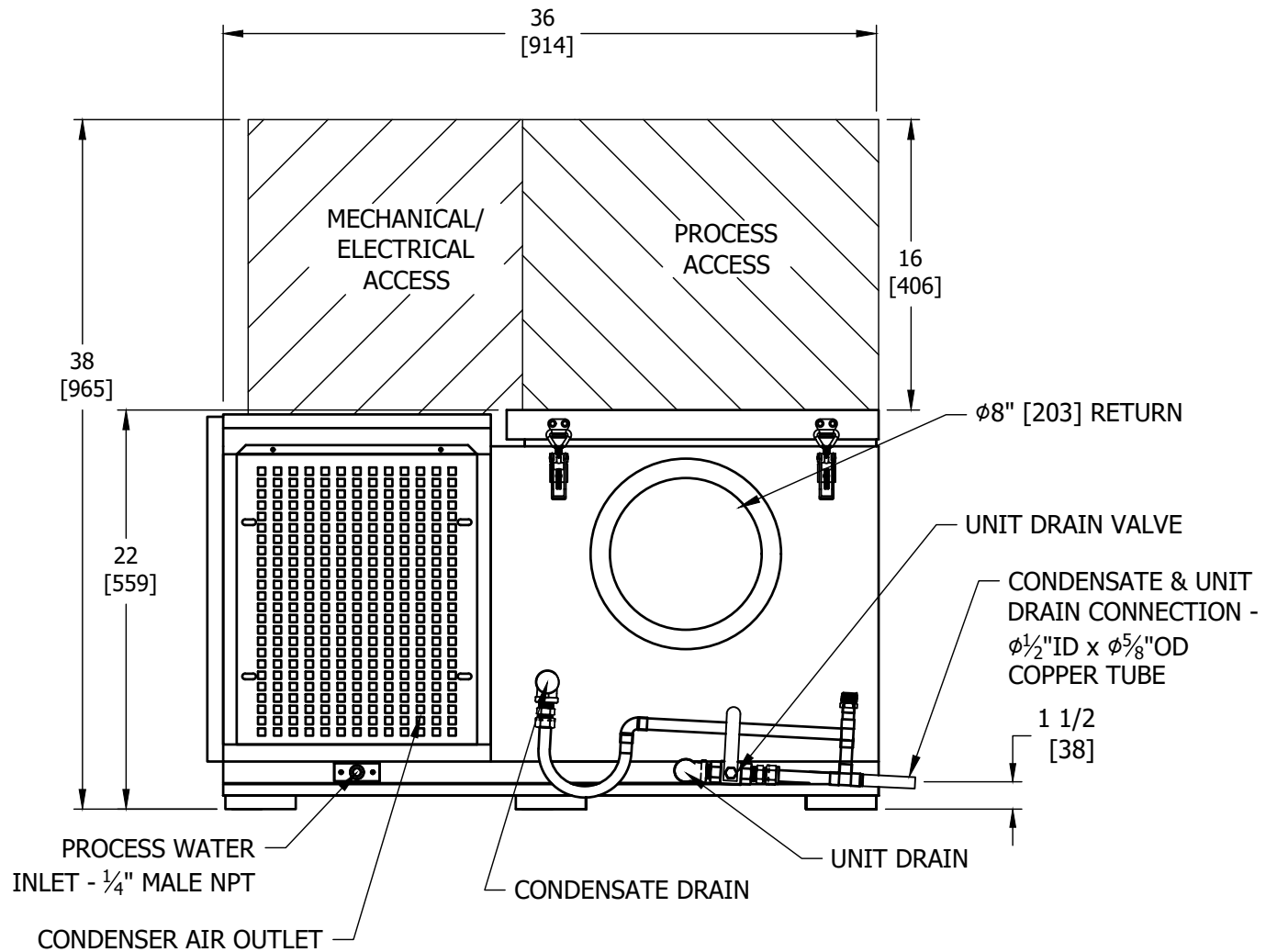
NOTE:
TOLERANCE UNLESS SPECIFIED: $\pm\frac{1}{4}$ " [6.35]

APPROVAL DRAWING	
<input type="checkbox"/> APPROVED	
<input type="checkbox"/> APPROVED AS NOTED	
<input type="checkbox"/> RETURNED FOR CORRECTIONS	
INITIAL: _____	DATE: _____



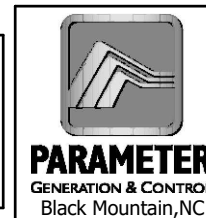
PARAMETER
GENERATION & CONTROL
Black Mountain, NC

TITLE 250-400CFM HORIZ. AIR HANDLER TOP VIEW			
DATE 27 Jan 2023		DRAWN HUGH LINTON	
DWG. REV. A	DWG. NO. 9324-81R0	MODEL REV.	SHEET 2 of 7

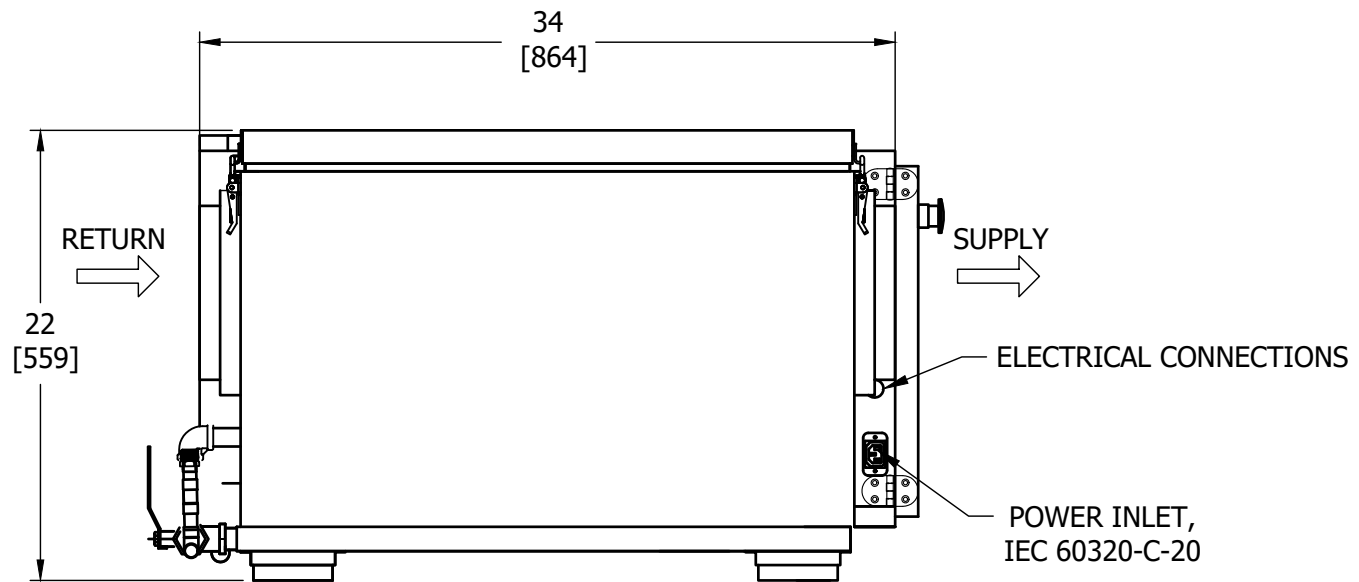


NOTE:
TOLERANCE UNLESS SPECIFIED: $\pm\frac{1}{4}$ " [6.35]

APPROVAL DRAWING	
<input type="checkbox"/> APPROVED	
<input type="checkbox"/> APPROVED AS NOTED	
<input type="checkbox"/> RETURNED FOR CORRECTIONS	
INITIAL: _____	DATE: _____



TITLE 250-400CFM HORIZ. AIR HANDLER RIGHT VIEW			
DATE 27 Jan 2023		DRAWN HUGH LINTON	
DWG. REV. A	DWG. NO. 9324-81R0	MODEL REV.	SHEET 3of7



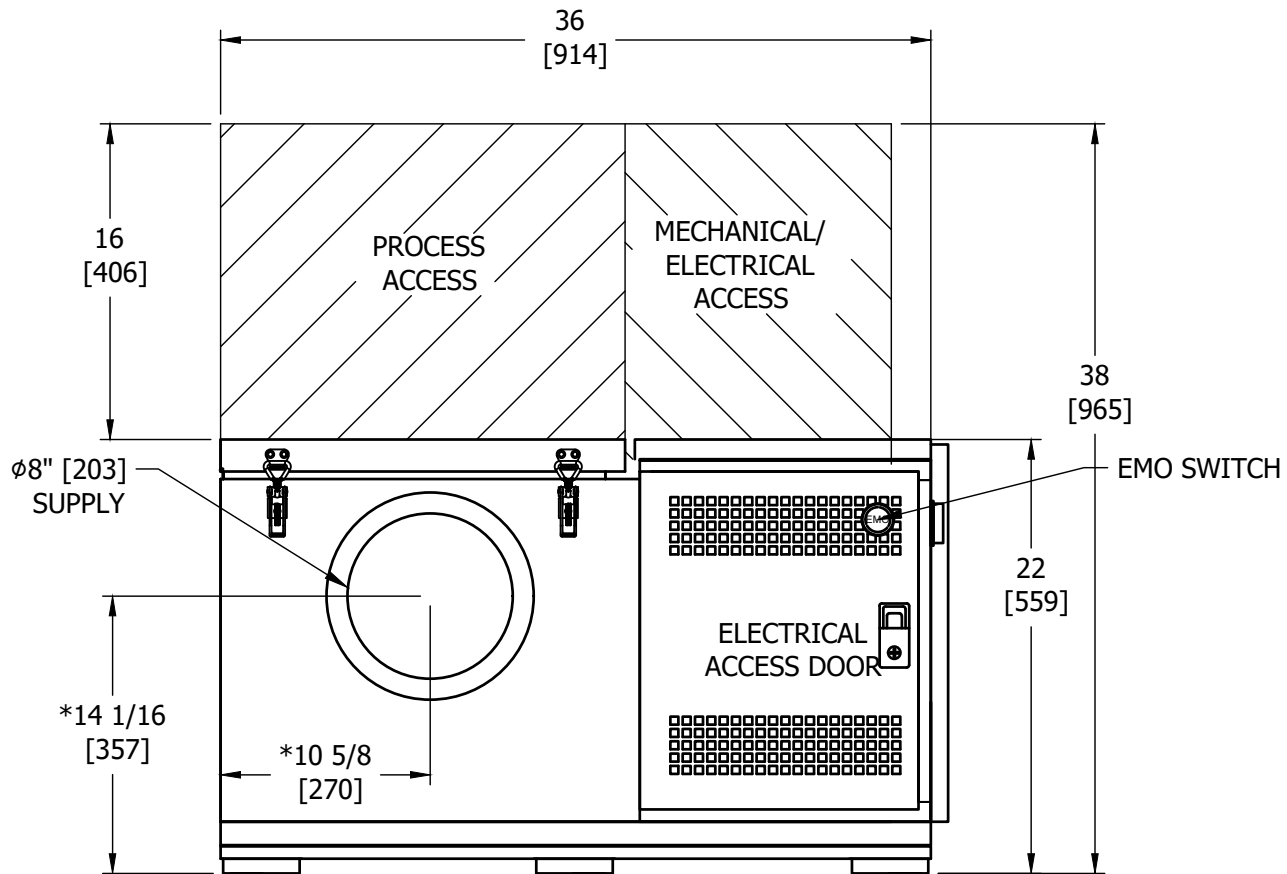
NOTE:
TOLERANCE UNLESS SPECIFIED: $\pm\frac{1}{4}$ " [6.35]

APPROVAL DRAWING	
<input type="checkbox"/> APPROVED <input type="checkbox"/> APPROVED AS NOTED <input type="checkbox"/> RETURNED FOR CORRECTIONS	
INITIAL: _____	DATE: _____



PARAMETER
GENERATION & CONTROL
Black Mountain, NC

TITLE 250-400CFM HORIZ. AIR HANDLER BACK VIEW			
DATE 27 Jan 2023		DRAWN HUGH LINTON	
DWG. REV. A	DWG. NO. 9324-81R0	MODEL REV.	SHEET 4 of 7



*NOTE:
SAME FOR RETURN
DUCT ON OPPOSITE
SIDE

NOTE:
TOLERANCE UNLESS SPECIFIED: $\pm 1/4$ " [6.35]

APPROVAL DRAWING	
<input type="checkbox"/> APPROVED	
<input type="checkbox"/> APPROVED AS NOTED	
<input type="checkbox"/> RETURNED FOR CORRECTIONS	
INITIAL: _____	DATE: _____



PARAMETER
GENERATION & CONTROL
Black Mountain, NC

TITLE 250-400CFM HORIZ. AIR HANDLER LEFT VIEW			
DATE 27 Jan 2023		DRAWN HUGH LINTON	
DWG. REV. A	DWG. NO. 9324-81R0	MODEL REV.	SHEET 5of7


MODEL NUMBER	9324-81R0		
VOLTAGE	208/230	200/230	VOLTS
PHASE	1	1	
FREQUENCY	60	50	HERTZ
FULL LOAD AMPS	11.5/11.1	11.8/11.2	AMPS, FLA
TYPICAL RUNNING AMPS	8.9/8.3	9.4/8.5	AMPS, RLA
MINIMUM CIRCUIT AMPACITY	13	13	AMPS
MAXIMUM EXTERNAL PROTECTOR	20	20	AMPS
MAXIMUM HEAT OF REJECTION	6,157	5,402	BTU/HOUR
	1,551	1,361	KCAL/HOUR
HEATERS, AIR	751/918	694/918	WATTS
REFRIGERANT	R450A		
PROCESS WATER MAX. PRESSURE	125		PSIG
		8.6	BAR
PROCESS WATER MIN. PRESSURE	0.25		PSIG
		0.02	BAR
PROCESS WATER MAX. USAGE	3		GAL/DAY
		11.4	L/DAY
MAX. CONDENSATE PRODUCTION	3		GAL/DAY
		11.4	L/DAY
WEIGHT NET/SHIPPING	325/500		LB
		147/227	KG
TEMPERATURE RANGE	SEE SUBMITTAL SUMMARY		°F
			°C
ACCEPTABLE AMBIENT RANGE	65-95		°F
		18.3-35	°C
TEMPERATURE CONSTANCY (CONTROL)	±0.36		°F
		±0.2	°C
RELATIVE HUMIDITY RANGE	SEE SUBMITTAL SUMMARY		%Rh
RH CONSTANCY (CONTROL)	±0.5		%Rh

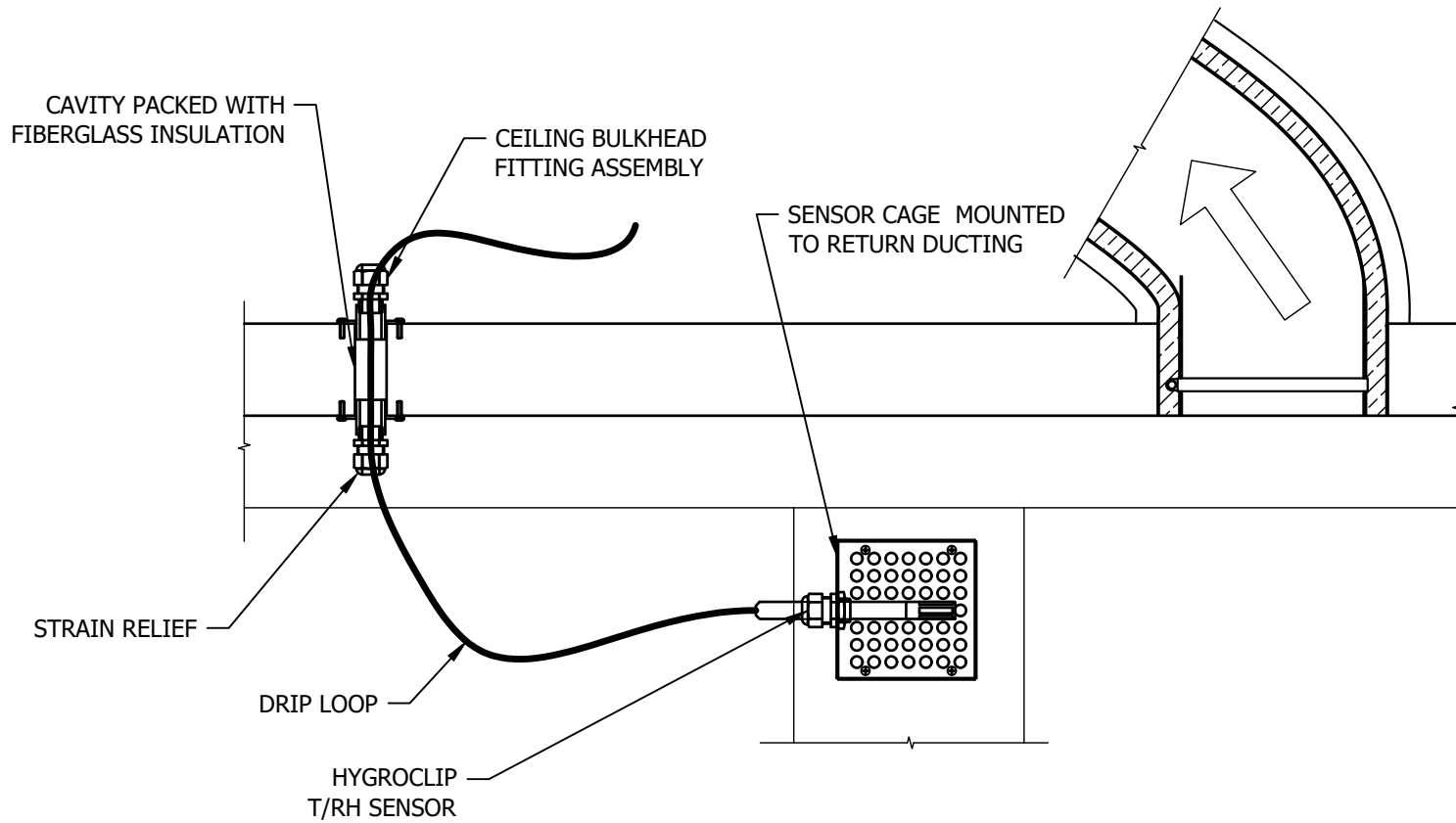
CUSTOMER MUST SUPPLY TO CONDITIONER

1. ELECTRICAL POWER
2. PROCESS WATER IN CONNECTIONS TO CONDITIONER
3. CONDENSATE/UNIT DRAIN CONNECTION

NOTE:
SPECIFICATIONS SUBJECT TO
CHANGE WITHOUT NOTICE

APPROVAL DRAWING	
<input type="checkbox"/> APPROVED <input type="checkbox"/> APPROVED AS NOTED <input type="checkbox"/> RETURNED FOR CORRECTIONS	
INITIAL: _____	DATE: _____

 PARAMETER <small>GENERATION & CONTROL Black Mountain, NC</small>	TITLE 9324-81R0 SPECIFICATIONS	
	DATE 27 Jan 2023	DRAWN HUGH LINTON
DWG. REV. A	DWG. NO. 9324-81R0	MODEL REV. SHEET 6 of 7



NOTES:

1. NO SEALANT TO BE USED IN WALL/CEILING CAVITY
2. SENSOR TO BE MOUNTED HORIZONTALLY, WIRE PERMITTING DRIP LOOP
3. BULKHEAD ASSEMBLY TO BE INSTALLED IN EITHER CEILING OR WALL AS CONVENIENT
4. TYPICAL INSTALLATION SHOWN, SENSOR MAY ALSO BE MOUNTED TO SUPPLY DUCT VIA BRACKET

NOTE:

TOLERANCE UNLESS SPECIFIED: $\pm\frac{1}{4}$ " [6.35]

APPROVAL DRAWING	
<input type="checkbox"/> APPROVED <input type="checkbox"/> APPROVED AS NOTED <input type="checkbox"/> RETURNED FOR CORRECTIONS	
INITIAL: _____	DATE: _____



PARAMETER
GENERATION & CONTROL
Black Mountain, NC

TITLE 250-400CFM HORIZ. AIR HANDLER SENSOR DETAIL			
DATE 27 Jan 2023		DRAWN HUGH LINTON	
DWG. REV. A	DWG. NO. 9324-81R0	MODEL REV.	SHEET 7 of 7